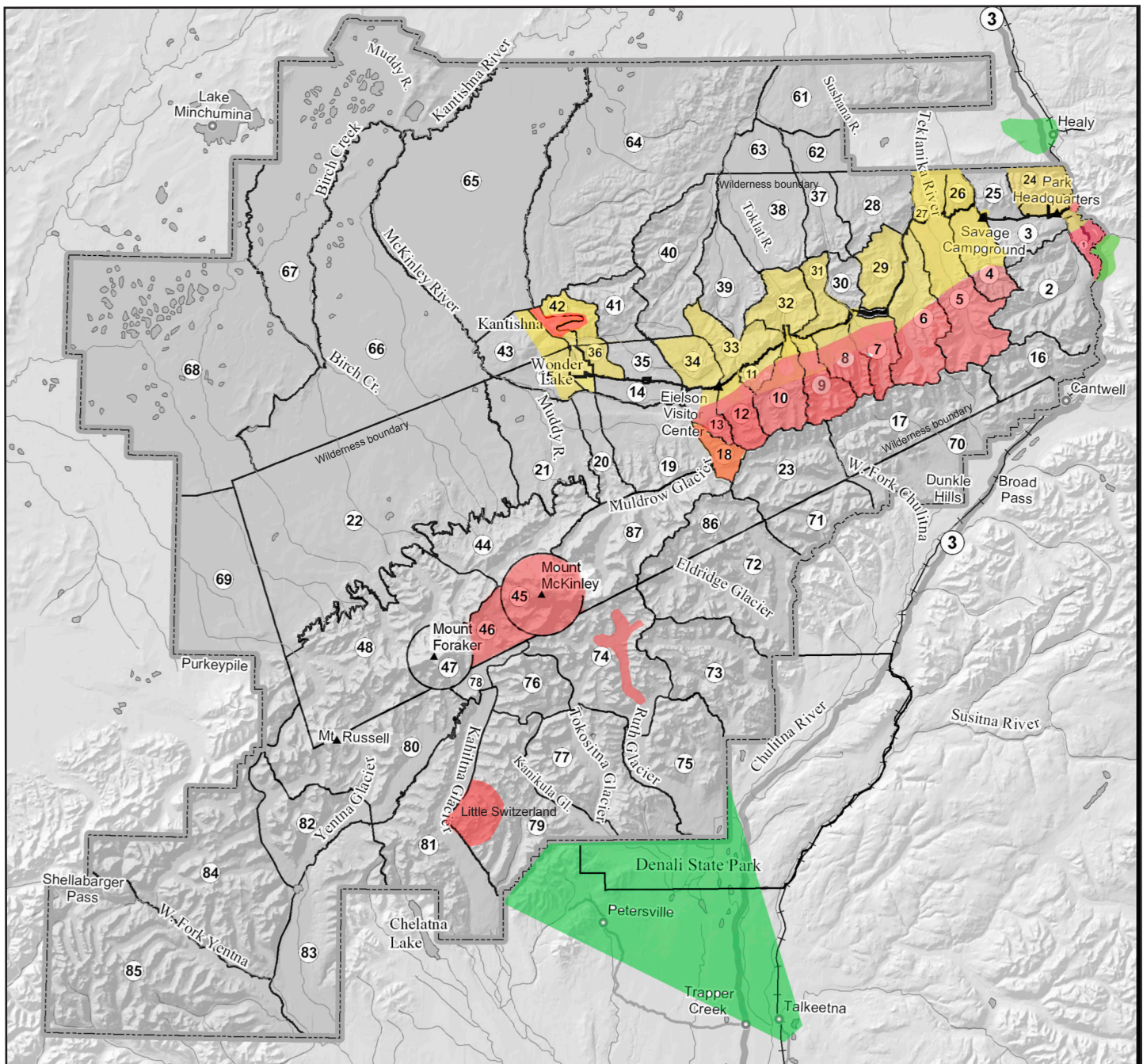


# Sound Sensitive Areas - Denali National Park and Preserve



## Areas with High Visitor Use

- Areas with high levels of on-the-ground visitor use
- Areas with high levels of on-the-ground visitor use and a larger number of reports of disturbance from aircraft
- Adjacent lands with high levels of on-the-ground use or occupancy and a larger number of reports of disturbance from aircraft

## Backcountry Management Plan Backcountry Units Denali National Park and Preserve



0 10 20 40 Miles